

# ORMOND TOWNE SQUARE

Ormond Beach, FL



251,645 Square Feet  
1,244 Parking Spaces  
32 Acres

#### Total Population

1 Mile: 2,480  
3 Mile: 28,545  
10 Mile: 175,354  
20 Mile: 348,136

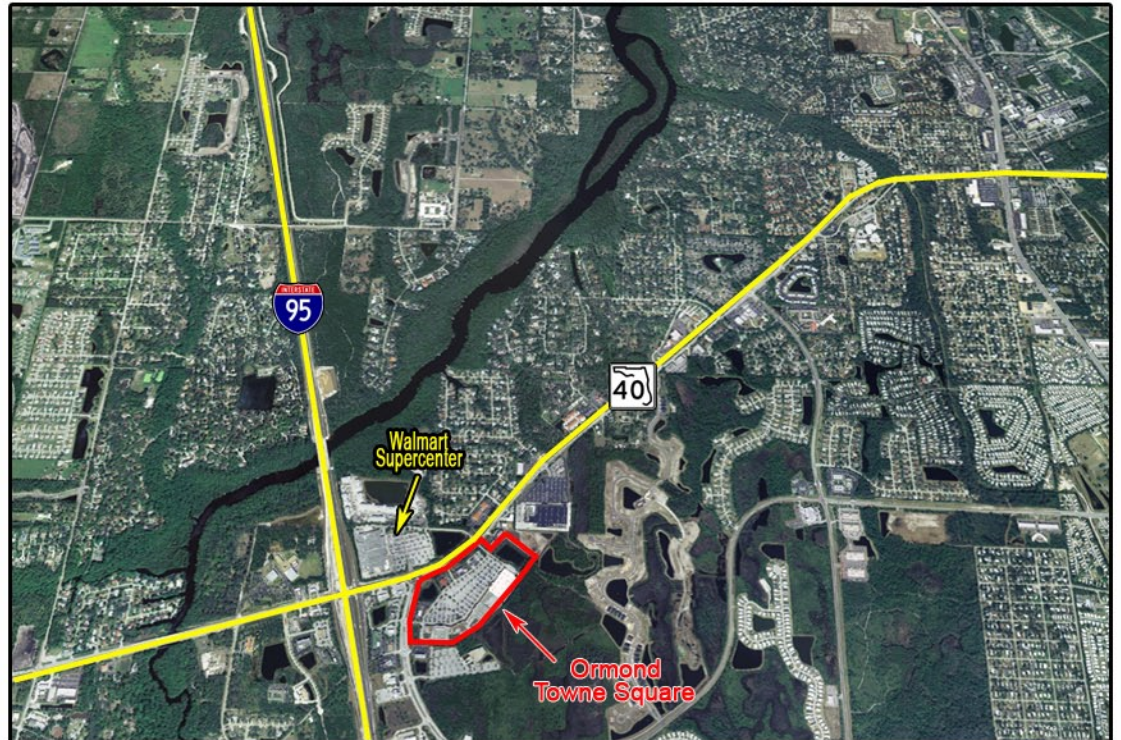
#### Households

1 Mile: 899  
3 Mile: 11,934  
10 Mile: 76,820  
20 Mile: 150,227

#### Ave HH Income

1 Mile: \$ 93,029  
3 Mile: \$ 65,922  
10 Mile: \$ 52,790  
20 Mile: \$ 57,286

Intersection Traffic Count  
56,430



# Ormond Towne Square - Ormond Beach, FL



100. Bealls	91,266 sf
200. Dollar Tree	10,200 sf
210. Greenberg Dental	2,965 sf
215. Hot Spot Tanning	1,600 sf
220. Vital Rejuvenation	2,000 sf
225. GNC	1,380 sf
235. <b>AVAILABLE</b>	<b>2,500 - 8,958 sf</b>
300. Ross	29,604 sf
410. Scottrade	2,000 sf
415. Jersey Mike's Subs	1,500 sf
420. FL Medical Hearing Centers	900 sf
435. Agave Fresh Mex & Cantina	3,288 sf
440. Magic Nails	1,050 sf
445. Delcato's Ristorante	1,400 sf
455. Party City	13,000 sf
465. Salon Ideologie	900 sf
470. Eyesavers	900 sf
475. Comfort Zone Shoes	1,350 sf
480. Hershey's Ice Cream	900 sf
485. Sports Clips	1,200 sf
490. Tropical Smoothie Cafe	1,600 sf
495. <b>AVAILABLE</b>	<b>1,975 sf</b>
500. Publix	47,814 sf
605. Sharp's Discount Liquors	1,600 sf
610. Ormond Beach Cleaners	1,600 sf
615. Red Bowl Asian Bistro	3,165 sf

**Outparcels:**

Bank Of America  
Sun Bank  
Chick-Fil-A  
Wendy's



300 North Nova Road, Ormond Beach, Florida 32174, (386) 673-3100